



Postdoc

Find your funding
opportunity at FZP CZU
2025

1

SELECT FUNDING SCHEME

- Choose from the list of possible funding opportunities on the following pages
- Check the eligibility of your application
- Consider the deadline

2

CHOOSE THE TOPIC

- Align your project focus with one of our research groups/supervisor

RESEARCH GROUPS

DEPARTMENTS & LABS



3

CONTACT US AND APPLY

- Contact us at internationalprojects@fzp.czu.cz
- We are ready to help you with the application



www.fzp.czu.cz



[fzpczu](https://www.linkedin.com/company/fzpczu)



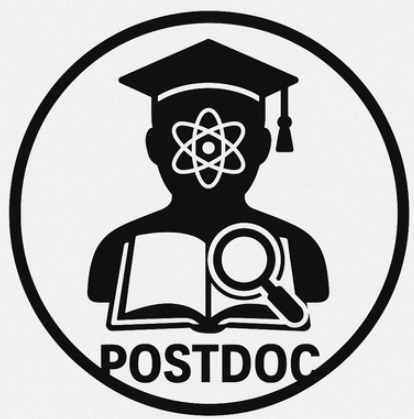
[fzp_czu_praha](https://www.youtube.com/channel/UCfzp_czu_praha)



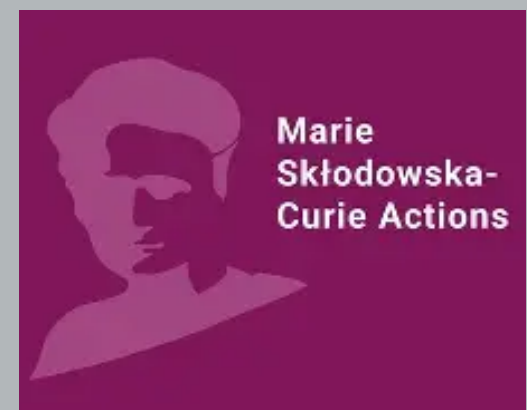
[fzp_czu](https://www.instagram.com/fzp_czu)



[fzpczu](https://www.facebook.com/fzpczu)



MSCA PF 2025



WHAT IS MSCA PF

Fully funded EU fellowship for up to 24 (30) months
Candidates with max. 8 years from Ph.D.
No more than 12 months in the Czechia in the last 3 years

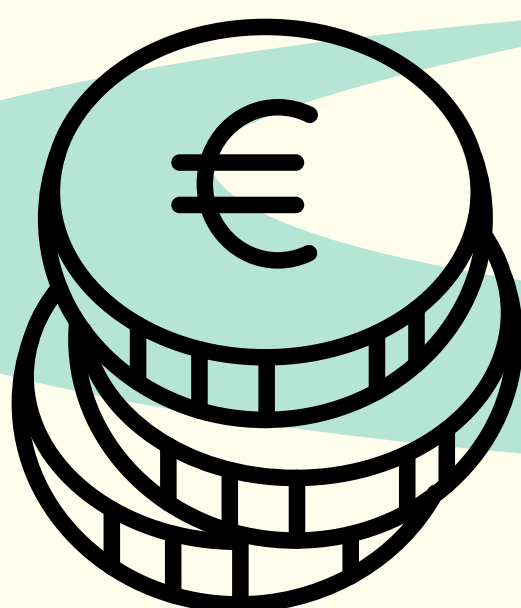


APPLICATION

10-PAGE PROJECT PROPOSAL + CV
Through the Funding and Tenders Portal
6 - 8 months of evaluation
Successful score above 93-95
Submitted by host organisation
Deadline: 10th September 2025

PROJECT PROPOSAL

Scientific Focus - any field
Methodology
Expected impact
European Priorities
Training and mobility aspects
Strong Host organisation and supervisor

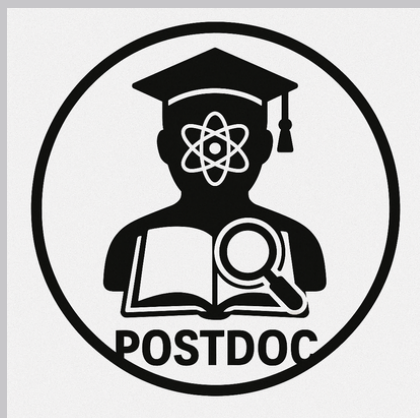


FUNDING

Gross Salary 4,694 EUR /month +
Family allowance 488 EUR /month
Research budget 24,000 EUR/project



Faculty of
Environmental Sciences



ERA FELLOWSHIP 2025



WHAT IS ERA FELLOWSHIP

Fully funded EU fellowship for up to 24 (30) months in the Widening countries (incl. Czechia)

For Applicants with a score above 70% in MSCA PF 2025, but not funded



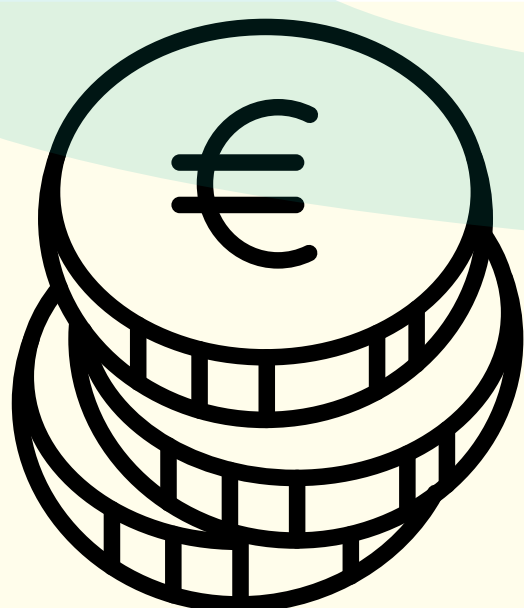
APPLICATION

Automatic resubmission of the MSCA PF 2025 proposal with a score higher than 70 but not funded

A successful score above 92 - 95
Deadline September 2025

PROJECT PROPOSAL

The same as for MSCA PF = automatic re-submission

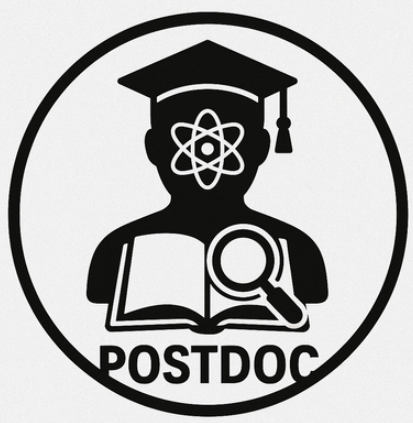


FUNDING

Gross Salary 4,694 EUR /month +
Family allowance 488 EUR /month
Research budget 24,000 EUR/project



Faculty of
Environmental Sciences



MSCA FELLOWSHIP CZ

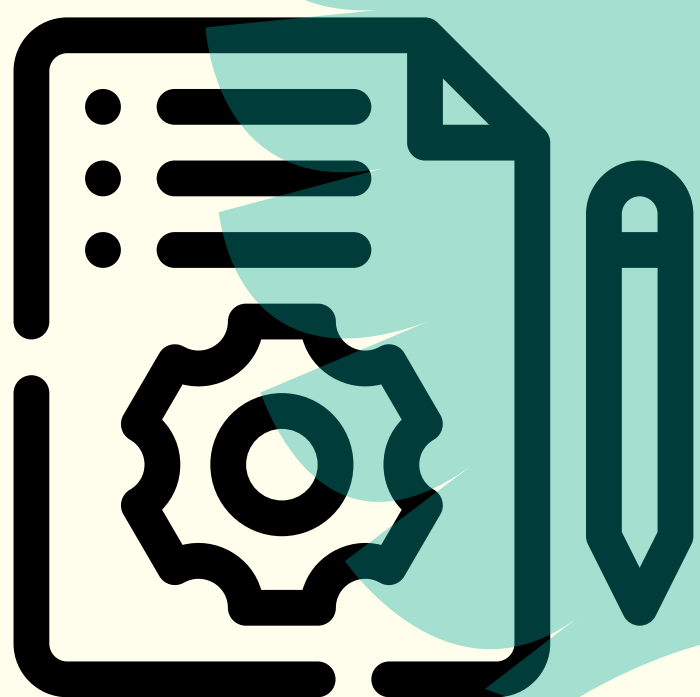


Operační program
Jan Amos Komenský



WHAT IS MSCA CZ

Fully funded Czech fellowship for up to 24 (30) months in the Czechia
For Applicants with a score above 70% in MSCA PF 2025, but not funded

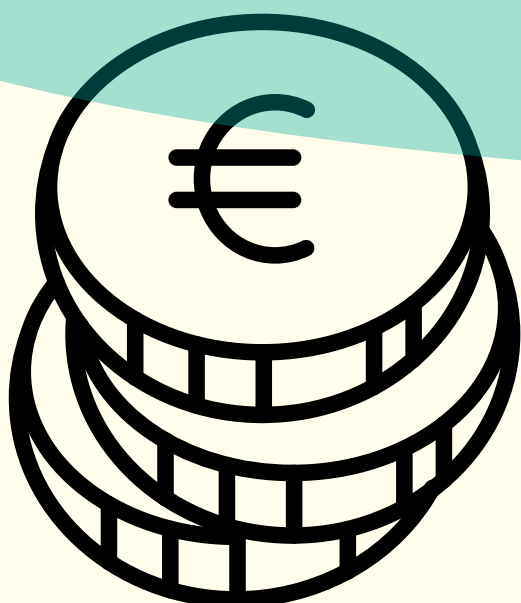


APPLICATION

Re-submission of MSCA PF 2025 to the Ministry of
Education, Sport and Youth CZ
Continuous submission
Submitted by host organisation
Based on the funds available - N/A now
Programme end 8/2026

PROJECT PROPOSAL

The same as for MSCA PF + Admin proposal

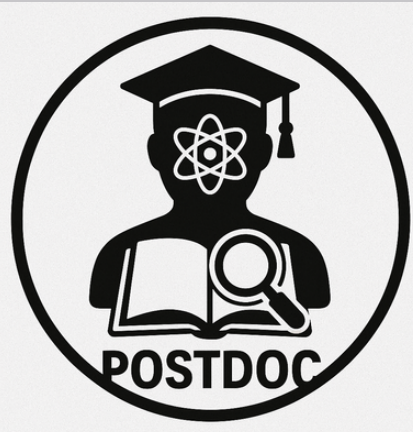


FUNDING

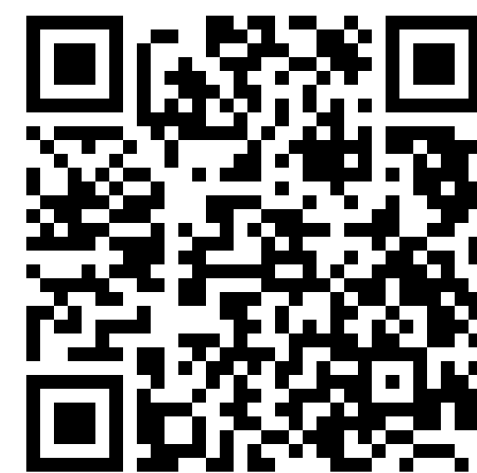
Gross Salary 110,346 CZK /month
+ family allowance 11,448 CZK /month
Research budget 600 000 CZK/project



Faculty of
Environmental Sciences



FELLOWSHIP INCOMING 2026



WHAT IS THE FELLOWSHIP INCOMING

Fully funded Czech fellowship for up to 36 months in the Czechia
Candidates with max. 4 years from Ph.D. as of 30/9/2025
No more than 1 year in the Czechia in the last 3 years

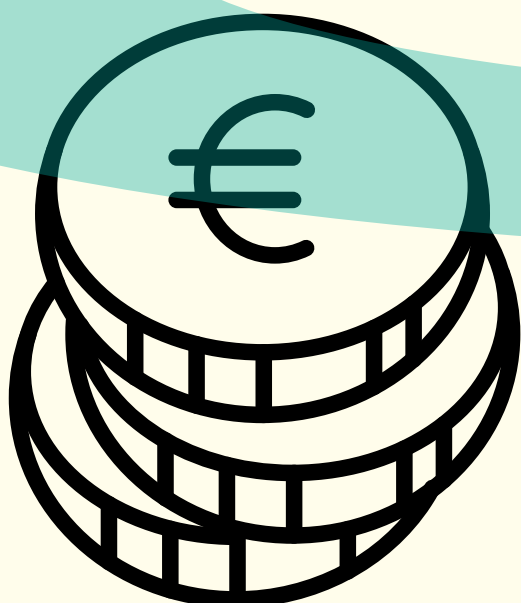


APPLICATION

10-PAGE PROJECT PROPOSAL + CV
Application through GRIS
6 - 8 months of evaluation
Submitted by host organisation
Deadline: April 2025
Success rate 30-40%

PROJECT PROPOSAL

Scientific Aims and Objectives
Background and State of the Art
Methodology and Work Plan
Expected Results and Impact
Feasibility and Risk Management
Budget

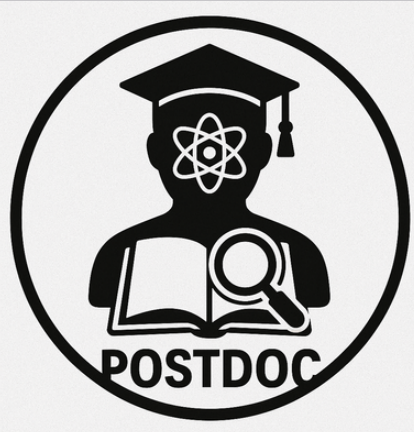


FUNDING

Overall budget - direct costs 5 mil. CZK
Gross Salary for PI max. 65,000 CZK /month



Faculty of
Environmental Sciences



FULLBRIGHT POSTDOCTORAL AWARDS 2025



WHAT IS THE POSTDOCTORAL AWARD

Fully funded U.S. fellowship for 3-9 months in the Czech (09/26 - 5/27)
U.S. Scholars candidates with a maximum of 5 years from Ph.D.
Research or Research/Teaching type of fellowships



APPLICATION

3 - 5 PAGE PROJECT STATEMENT + CV
2 Recommendations
Short Essays
Reference List + Syllabi
Invitation letter(s)
Submitted by applicant
Deadline: September 15, 2025

PROJECT PROPOSAL

Research Project
Teaching/Advise/Mentor students
Teach courses designed of Host institution
Teach courses of the applicant's choosing



FUNDING

\$2,300 USD - \$2,800 USD/month
Travel and relocation \$1,500 USD
Dependent allowance \$300 - \$700
Travel allowance \$1000/dependent



Faculty of
Environmental Sciences